



Identification of Critical Ground-Motion and Bridge Features for Performance Assessment of Regional Transportation Networks

Marc Eberhard

Jeffrey Berman

Brett Maurer

University of Washington

Nasser Marafi

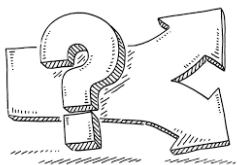
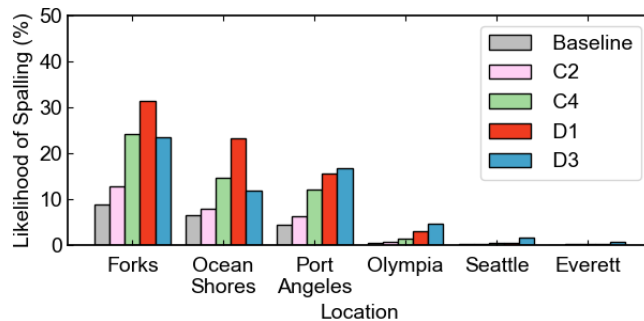
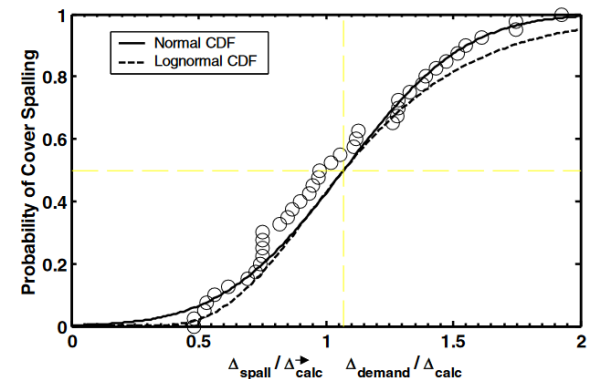
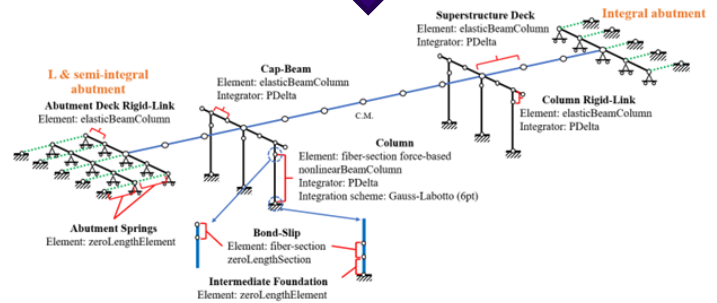
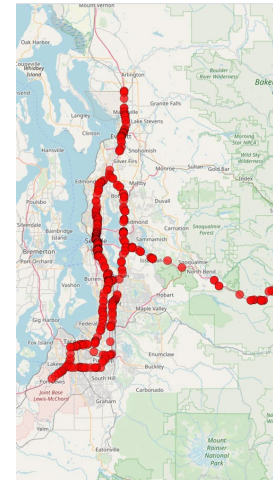
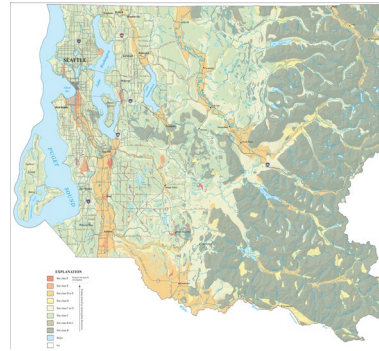
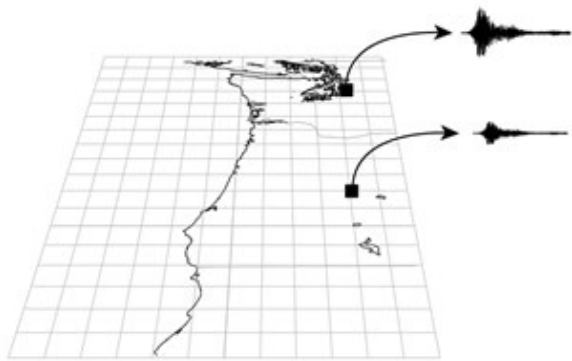
RMS

Acknowledgments



Goals

- Compare contributions of sources of uncertainty to estimates of the seismic performance of individual bridges and transportation networks.
- Select Key Parameters based on:
 - Impact of Uncertainties in Parameters on Performance,
 - Effort Required to Collect Information
 - Effort required to Incorporate Information
- Serve as laboratory to help develop/evaluate NHERI SimCenter Tools (e.g., R2D).



Impacts

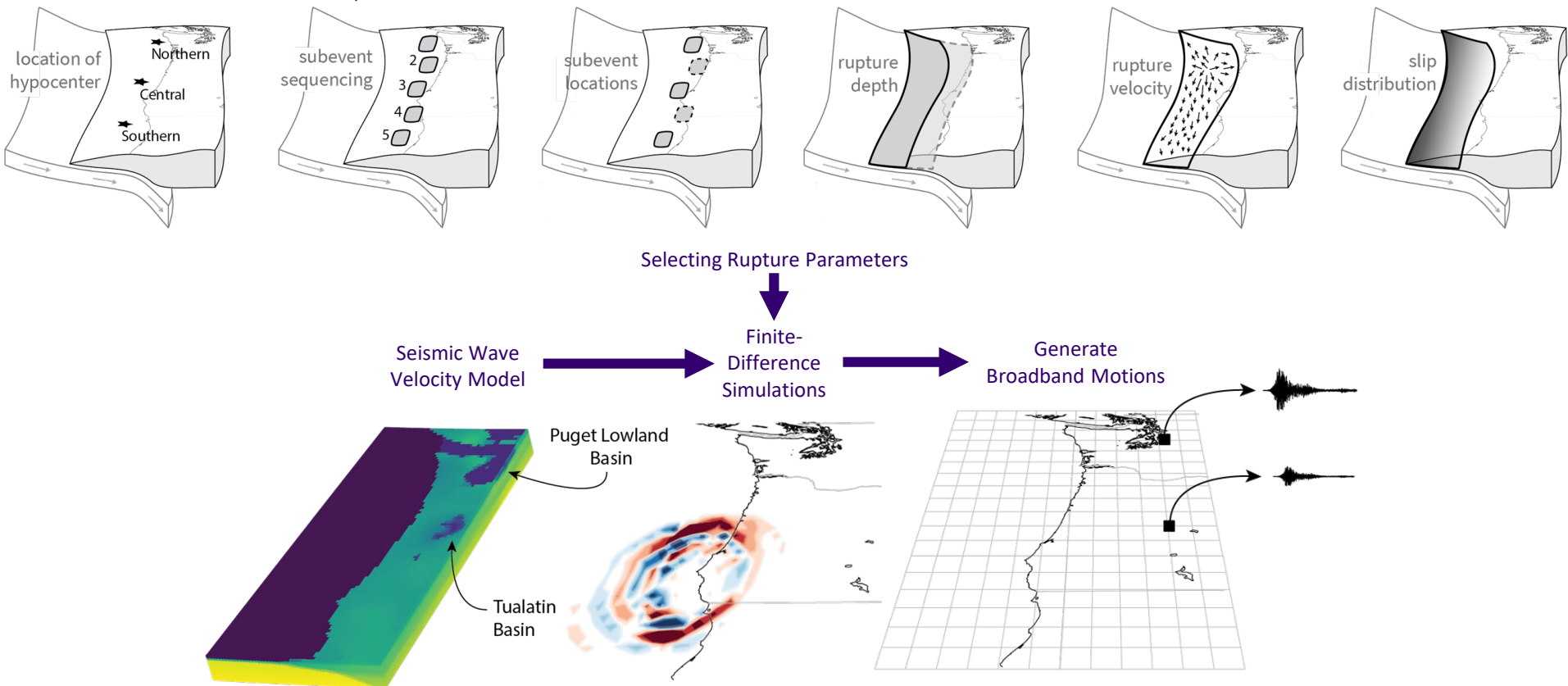
- Bridge Closures/Restrictions of Individual Bridges
- Network Connectivity
- Pre-tsunami evacuation
- Health care system operation and access
- Disparate impacts



Improved Earthquake Resilience?



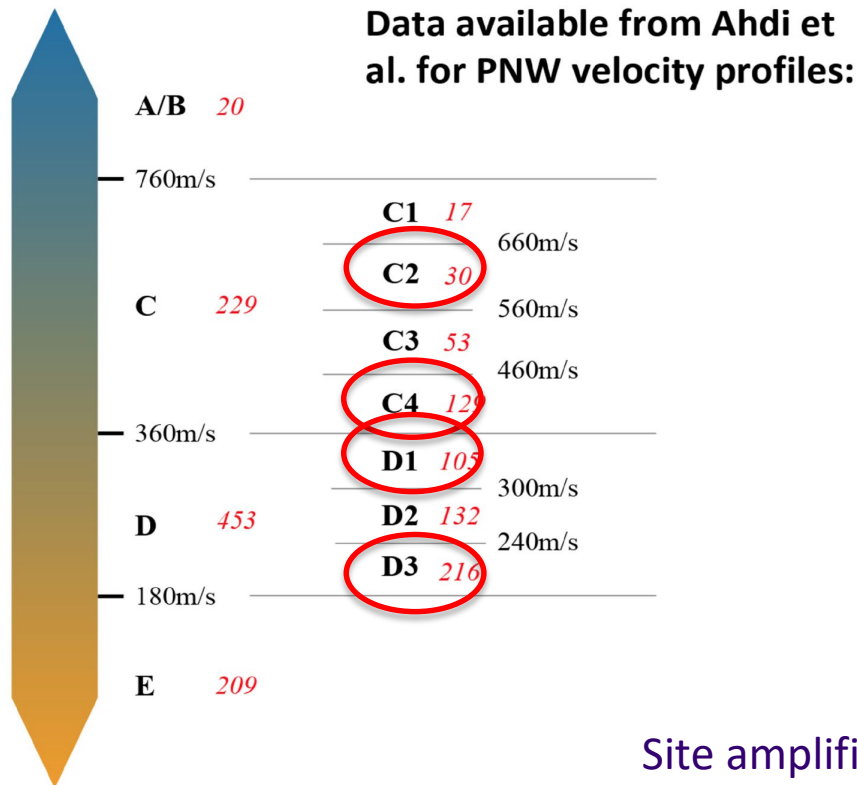
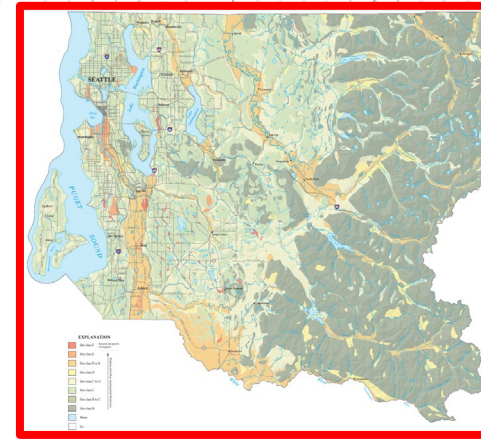
30 M9 CSZ Simulations



Reference: Frankel, A., Wirth, E., Marafi, N., Vidale, J., Stephenson., W. "Broadband Synthetic Seismograms for Magnitude 9 Earthquakes on the Cascadia Megathrust Based on 3D Simulations and Stochastic Synthetics", BSSA, 2018

Site Conditions

- Simulation: $V_s = 600$ m/s
- Profiles for Ahdi et al. (2017)

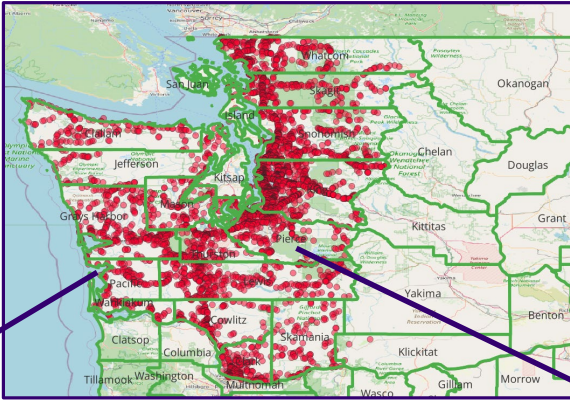


10 soil profiles for each site class

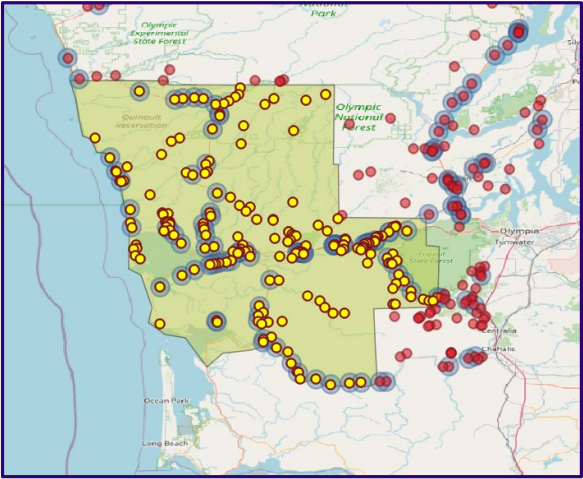
Site amplification modeled by Alex Grant, USGS

Bridge Inventories

NBI
Bridge Database



Olympic Peninsula
Bridge Database



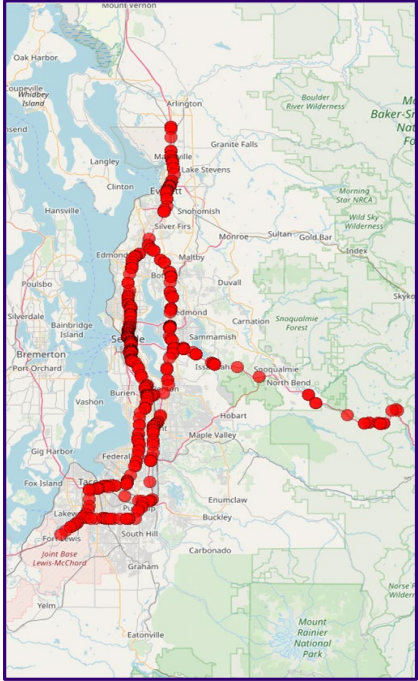
Current Activity

Documented detailed properties for ~750 Bridges

Upcoming Activity

Extrapolating from NBI data to detailed data (probabilistically)

WSDOT-UW Bridge Database

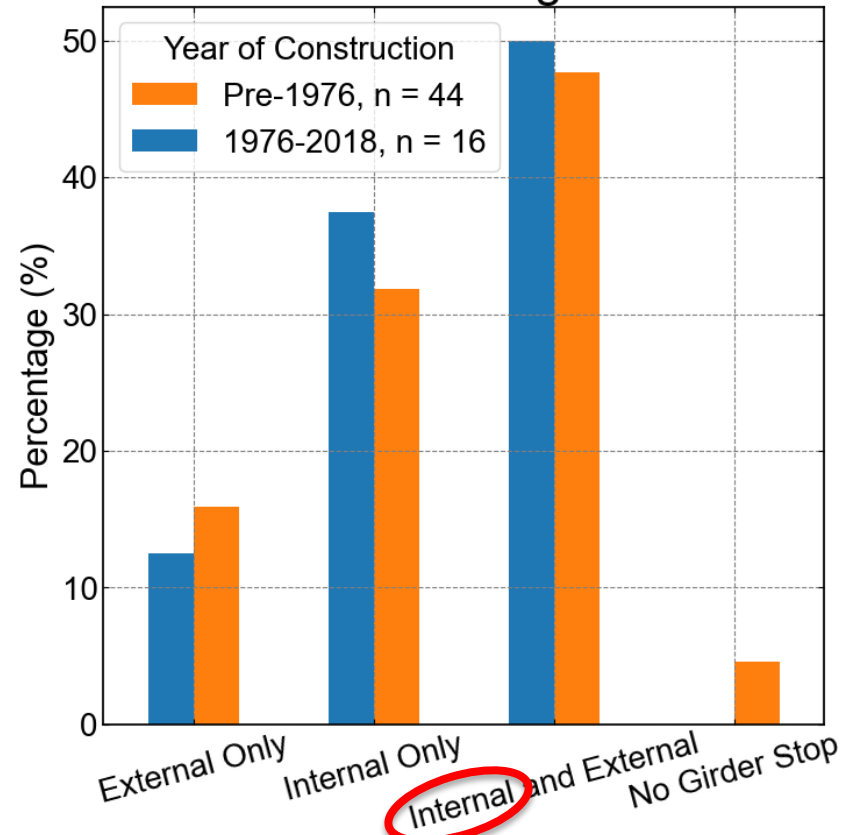


Shear Keys

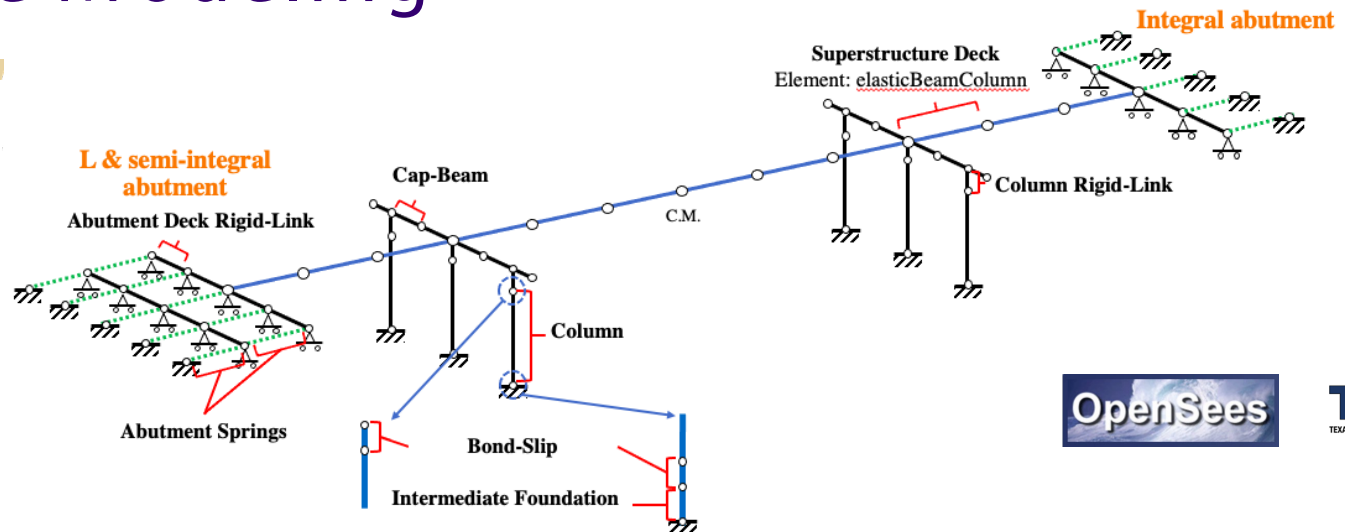
Box Bridges



Other Bridges

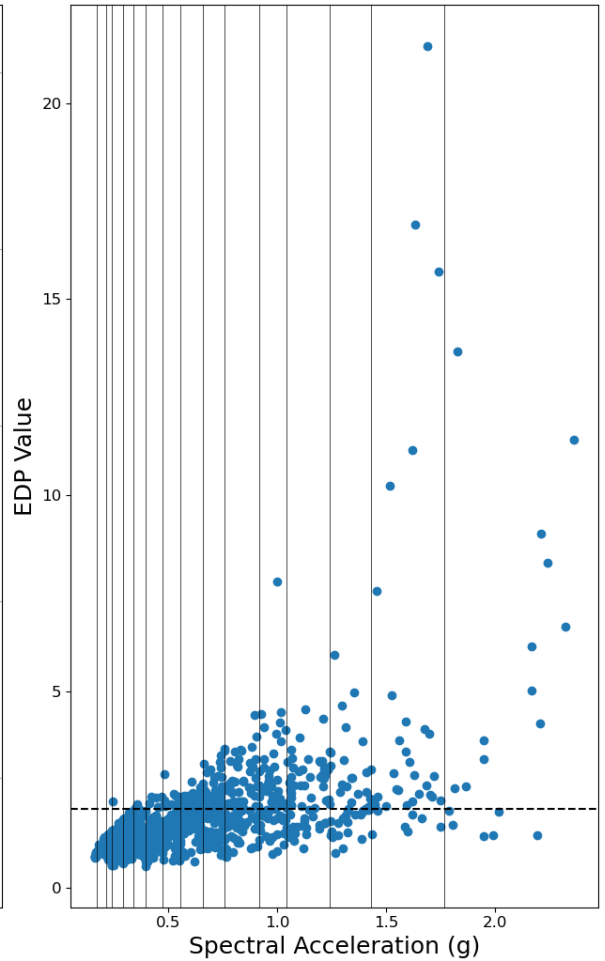
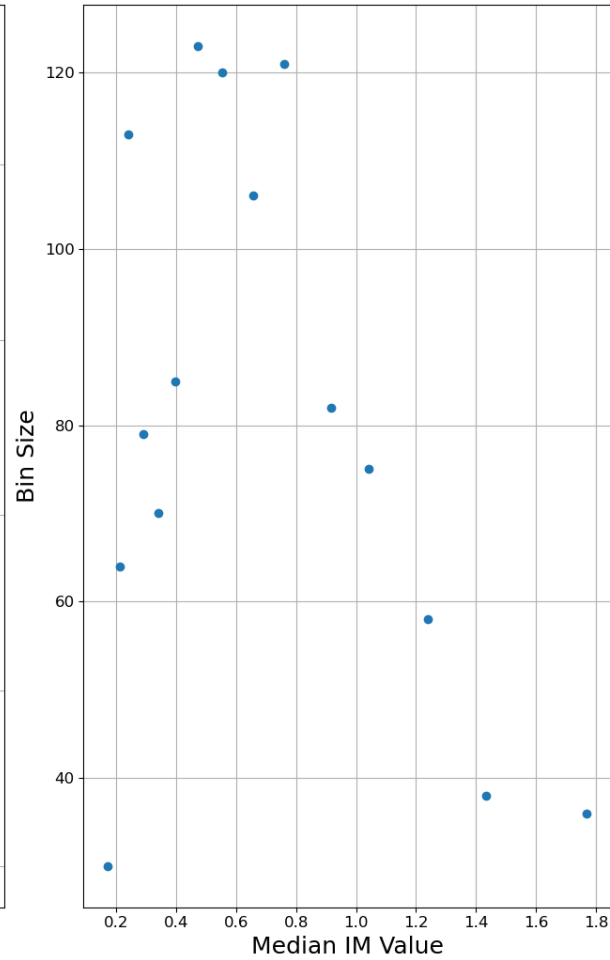
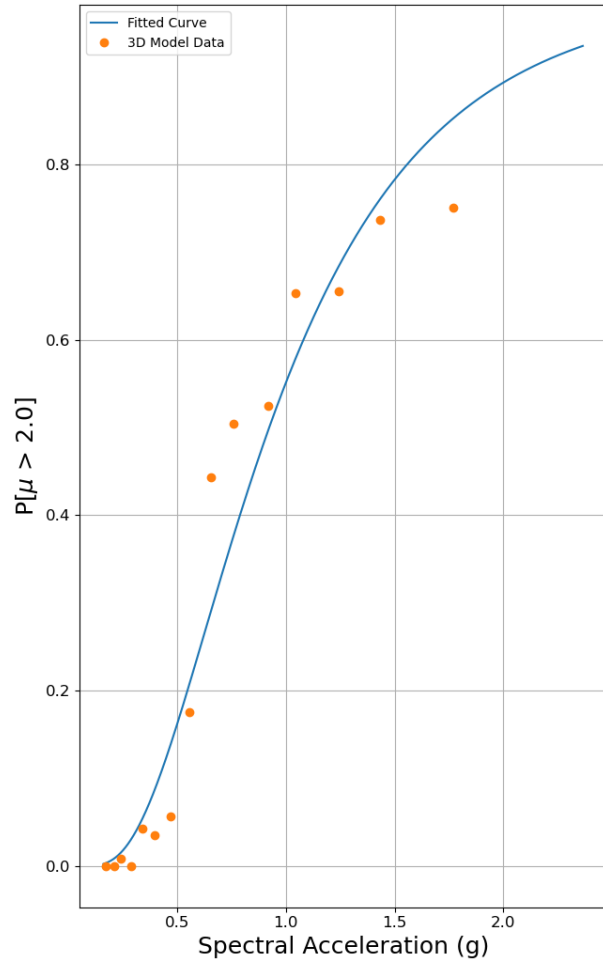


Bridge Modeling



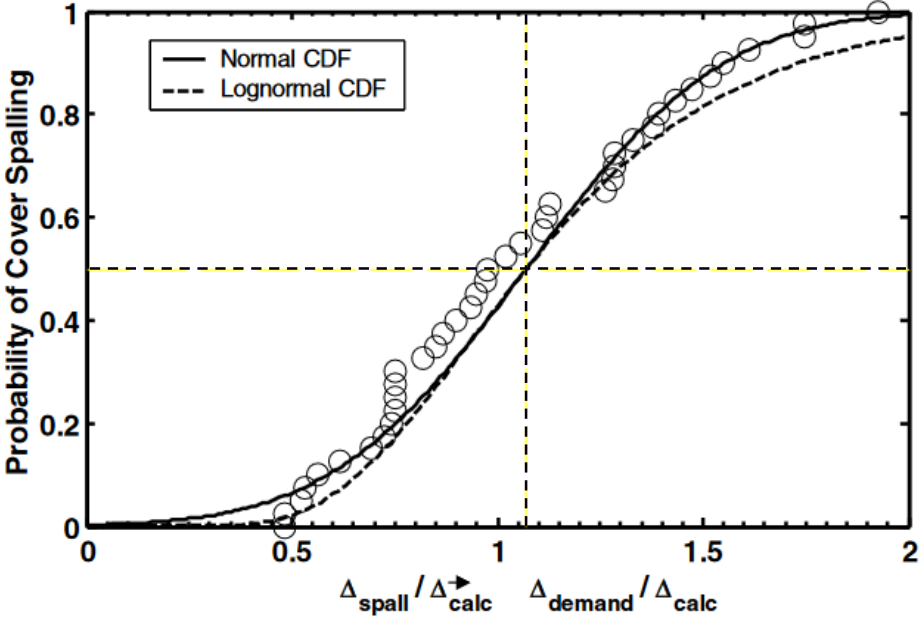
- Reference Bridge
- Changes to abutment properties
 - Shear keys
 - Abutment continuity
 - Foundation types
 - Bearing pads
- Changes to column height
 - Doubled
 - Halved
- Changes to transverse reinforcement
- 30 earthquake scenarios
- Location
 - Port Angeles
 - Ocean Shores
 - Seattle
- Site Classes
 - C2
 - C4
 - D1
 - D3
- 10 profiles for each site class

Structural Demands (EDPs)

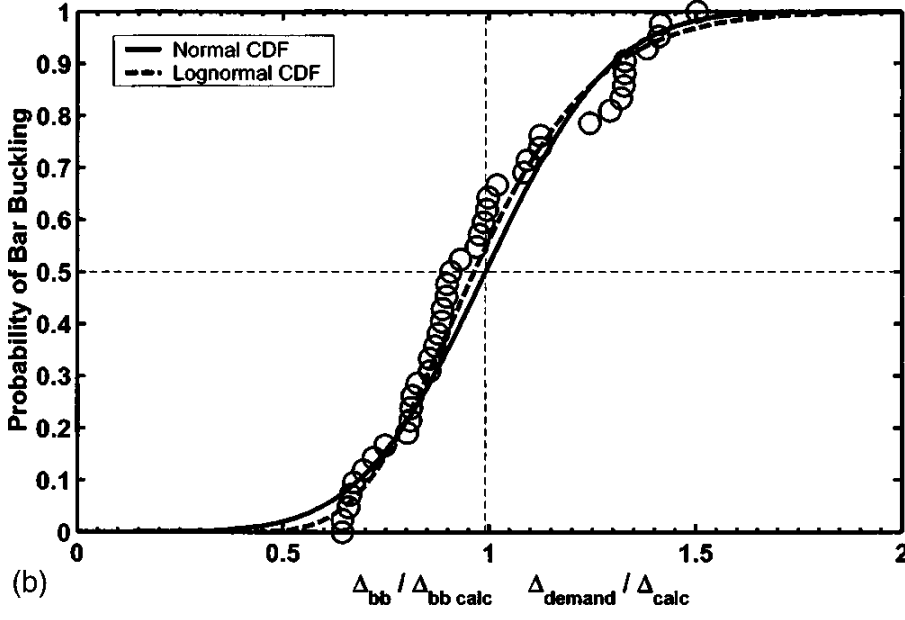


Damage Fragility Curves

Bent drift ratio



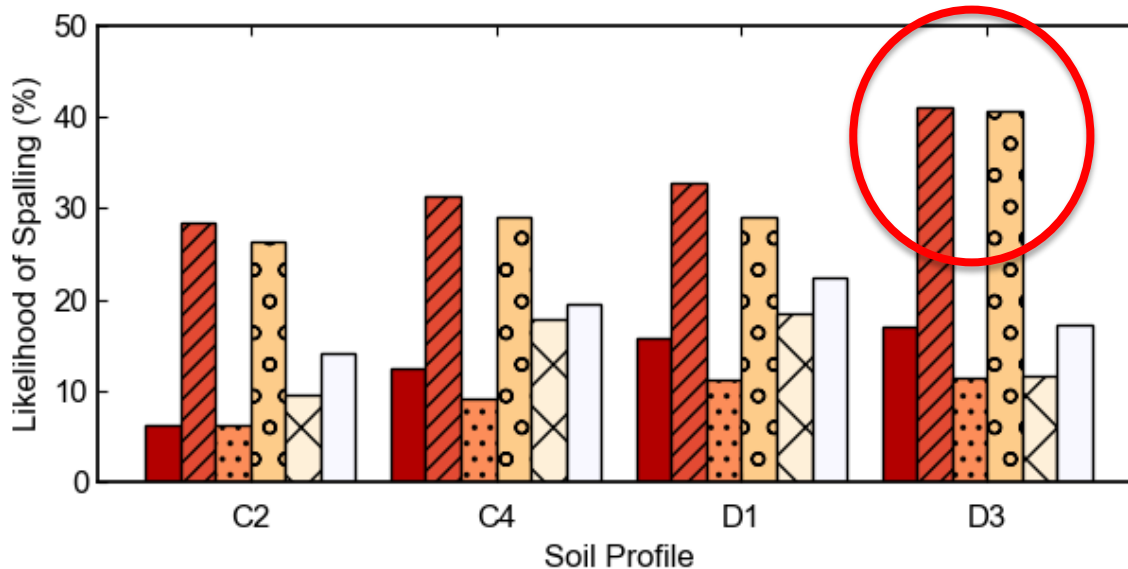
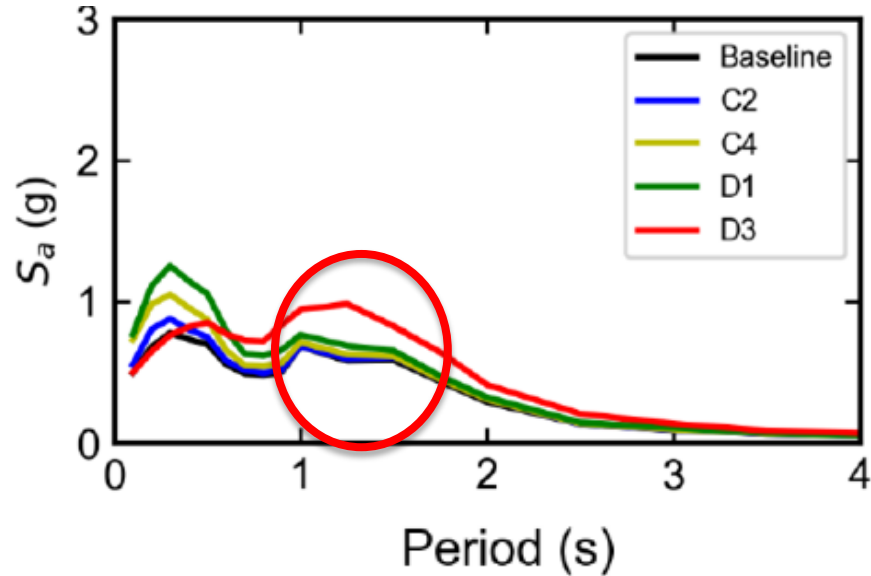
Likelihood of concrete spalling



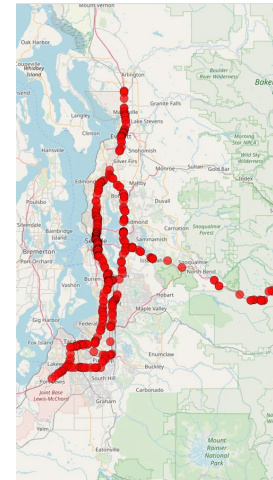
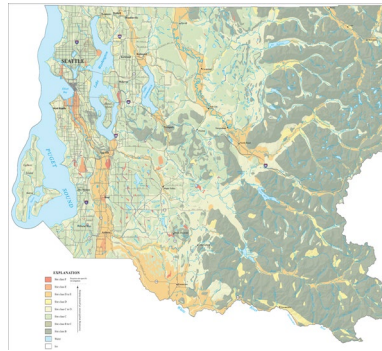
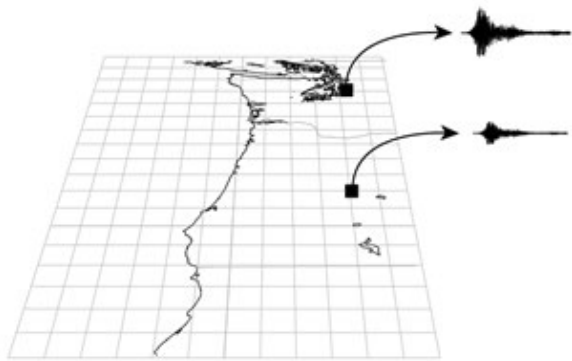
Likelihood of bar buckling

Effect of Column Height and Shear Key

Port Angeles

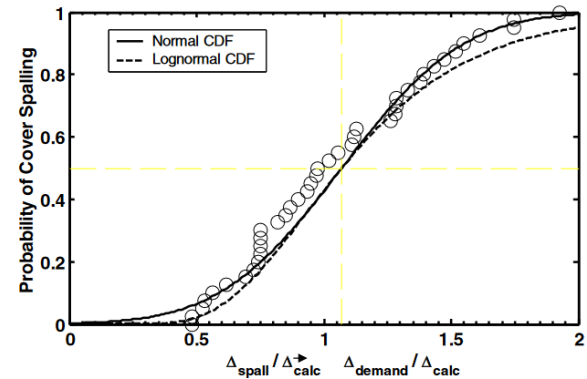
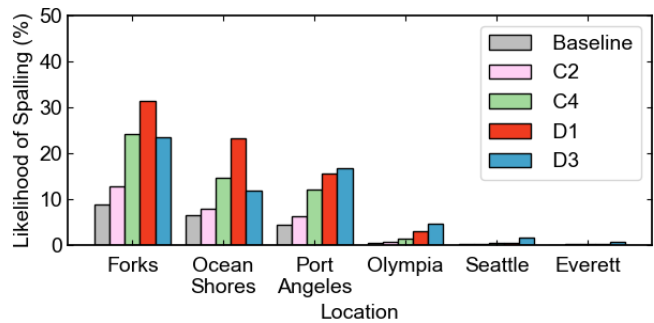
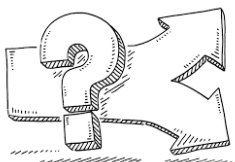
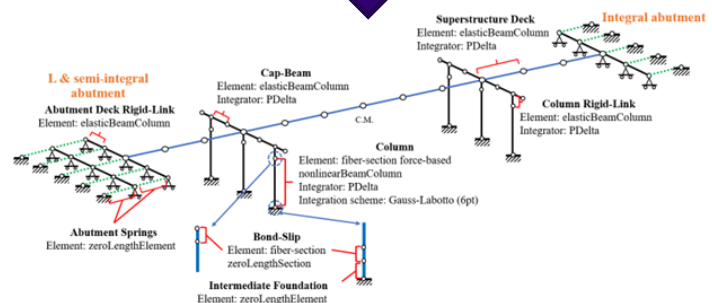


- Soft Soils
- Tall Columns
- No Shear Key



**Improved
Earthquake
Resilience?**

- Impacts**
- Bridge Closures/Restrictions of Individual Bridges
 - Network Connectivity
 - Pre-tsunami evacuation
 - Health care system operation and access
 - Disparate impacts



Next Steps

- **Predicting Bridge Properties**
 - Expected/Observed Correlations
 - Machine Learning (ABC-IBT UTC)
- **Fragility Curves for Less Common Bridges**
 - Timber Bridges Superstructures and Substructures
 - Moveable Bridges
- **Liquefaction and Landslides**
 - Triggering
 - Impact
- **Social Impacts (CoPes)**
 - Post-event decision making
 - Health care system operation and access
 - Disparate impacts
- **Implementation in R2D**

Thank you

