



Berkeley
UNIVERSITY OF CALIFORNIA

PEER Hub Image-Net Challenge 2018 and ϕ -Net



Yuqing Gao and Khalid M. Mosalam

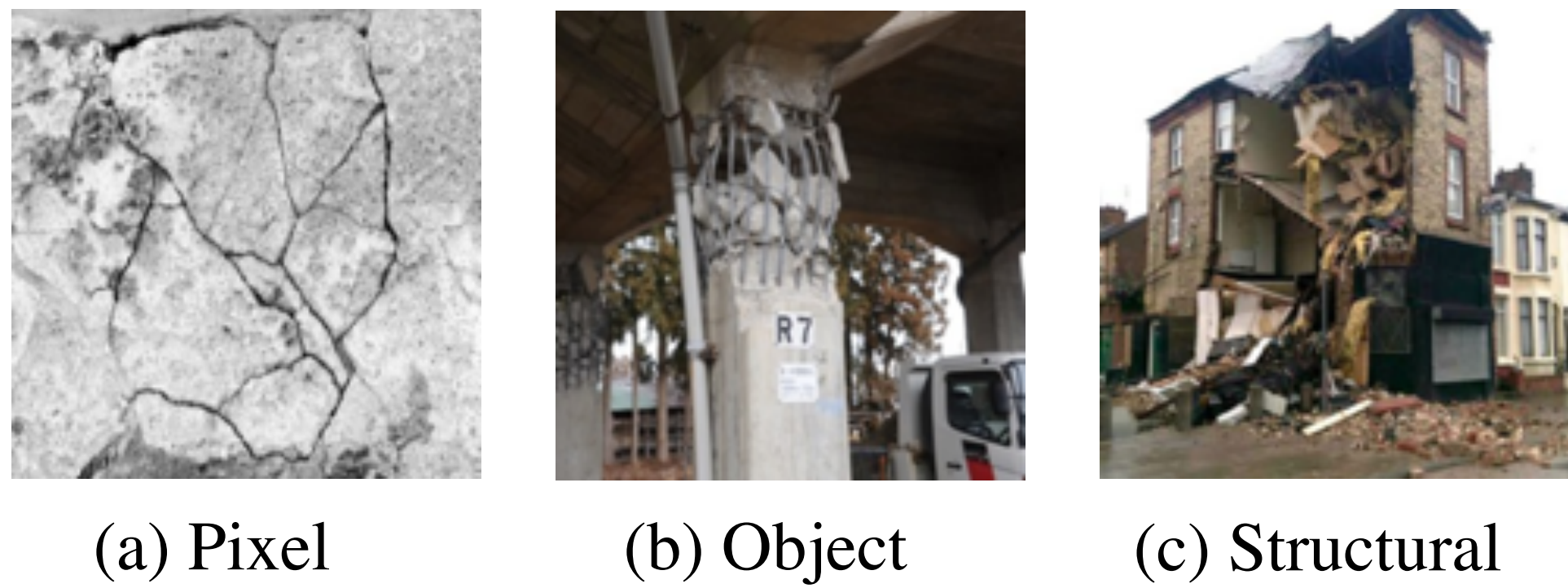
Department of Civil and Environmental Engineering, University of California Berkeley

Abstract

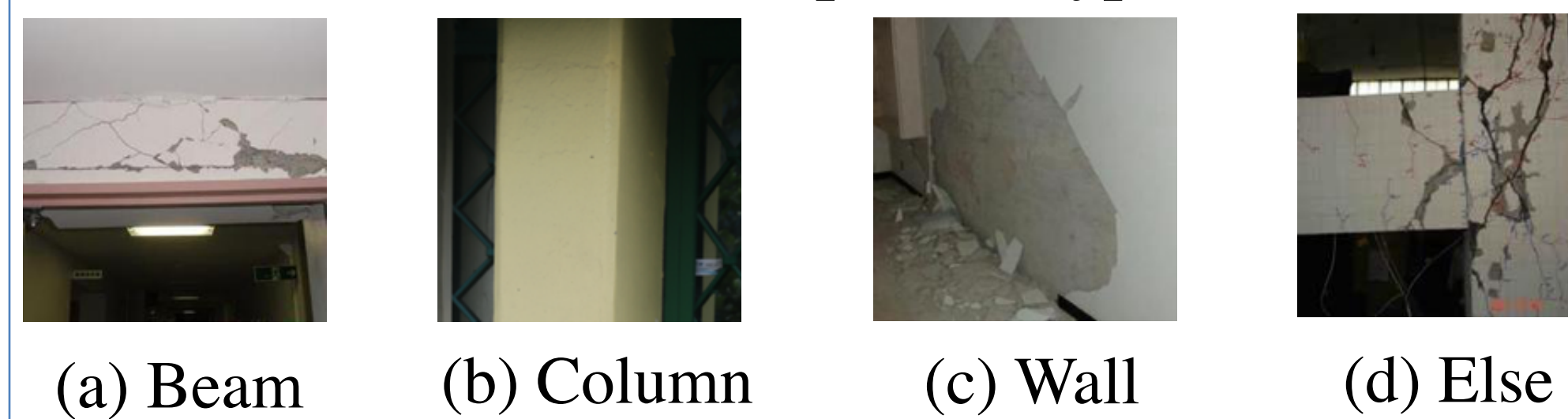
PEER (Pacific Earthquake Engineering Research Center) has developed the first structural engineering dataset that incorporates Machine Learning models of detecting and categorizing damage in images. The PEER Hub Image-Net (ϕ -Net) dataset tool will enhance the field and application of vision-based structural health monitoring for researchers and practitioners in natural hazards engineering.

Introduction to PHI Challenge 2018 and ϕ -Net

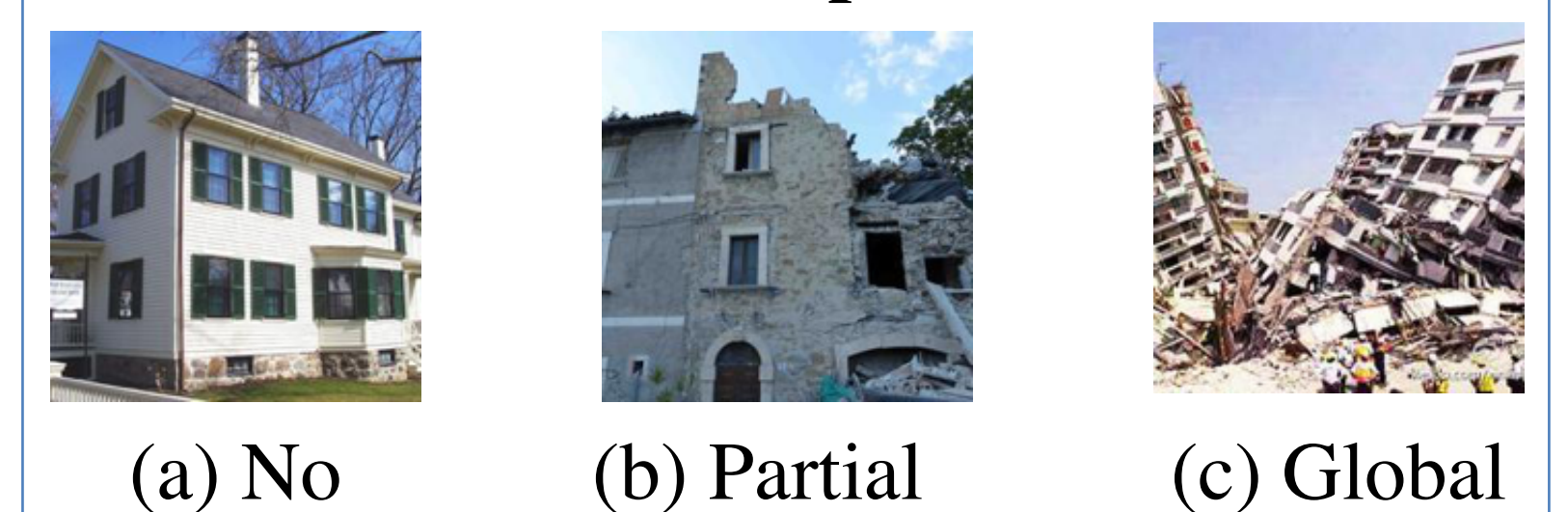
Task 1 Scene Level



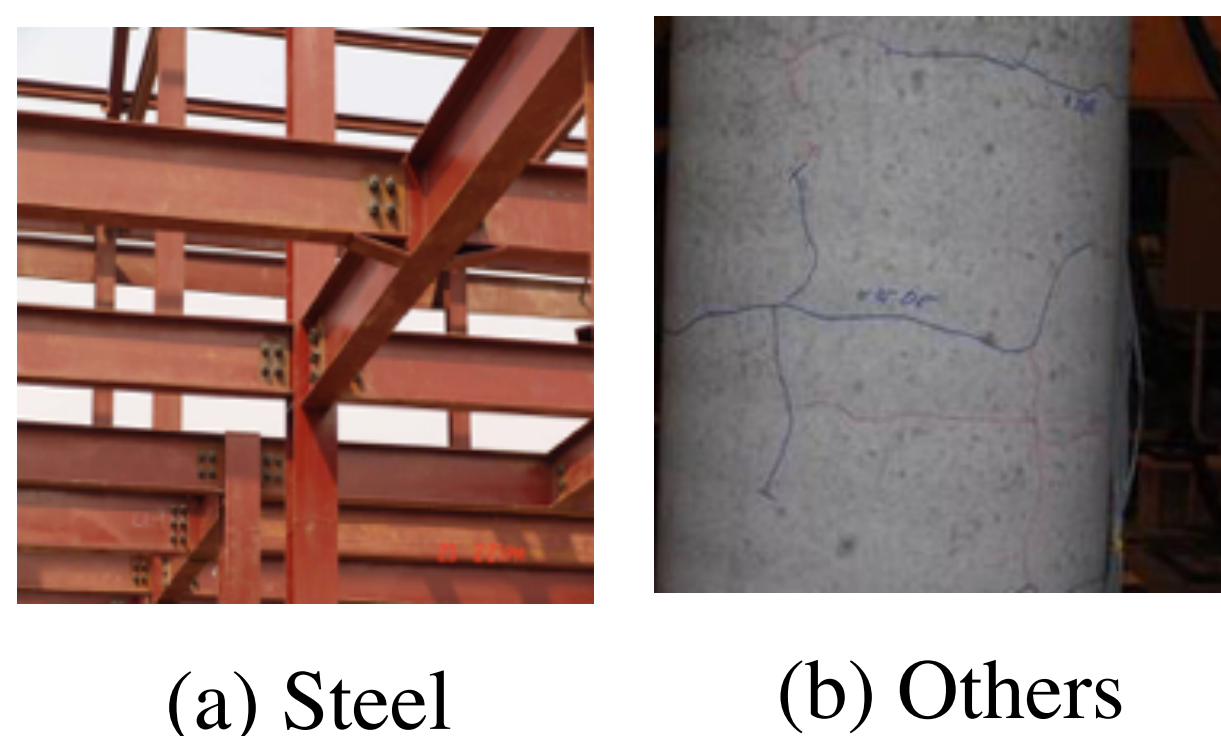
Task 6 Component Type



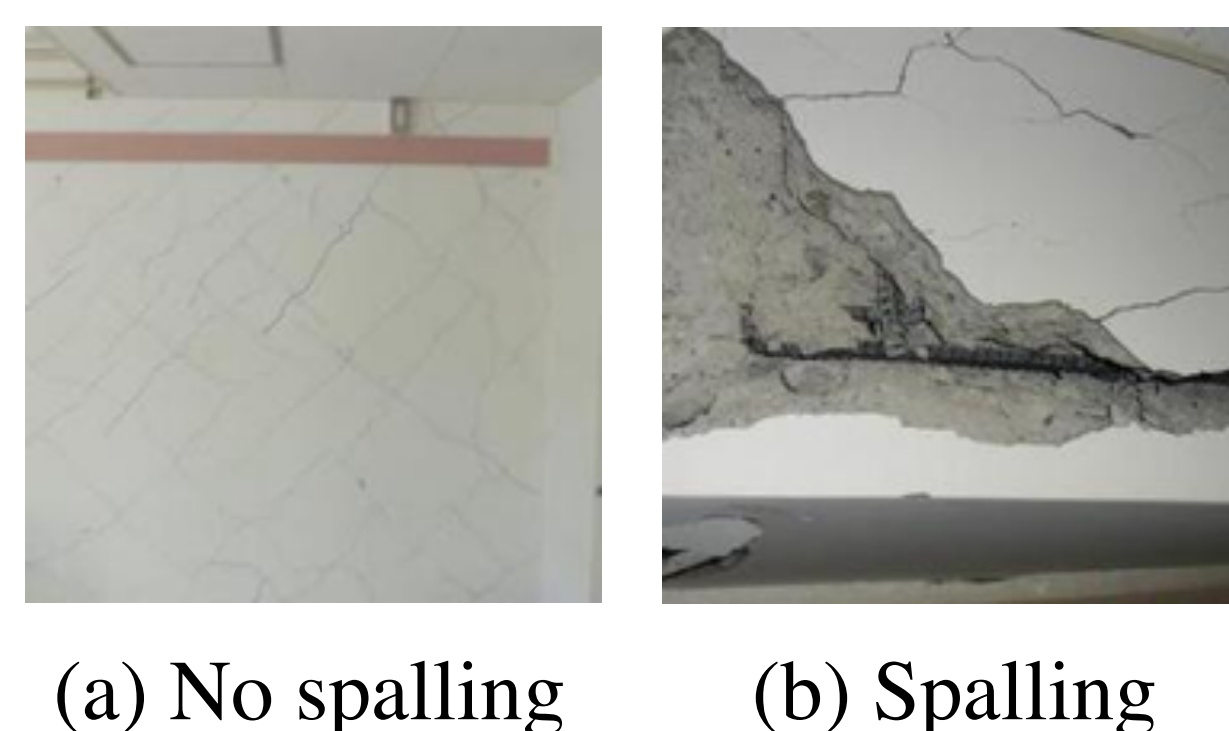
Task 5 Collapse Check



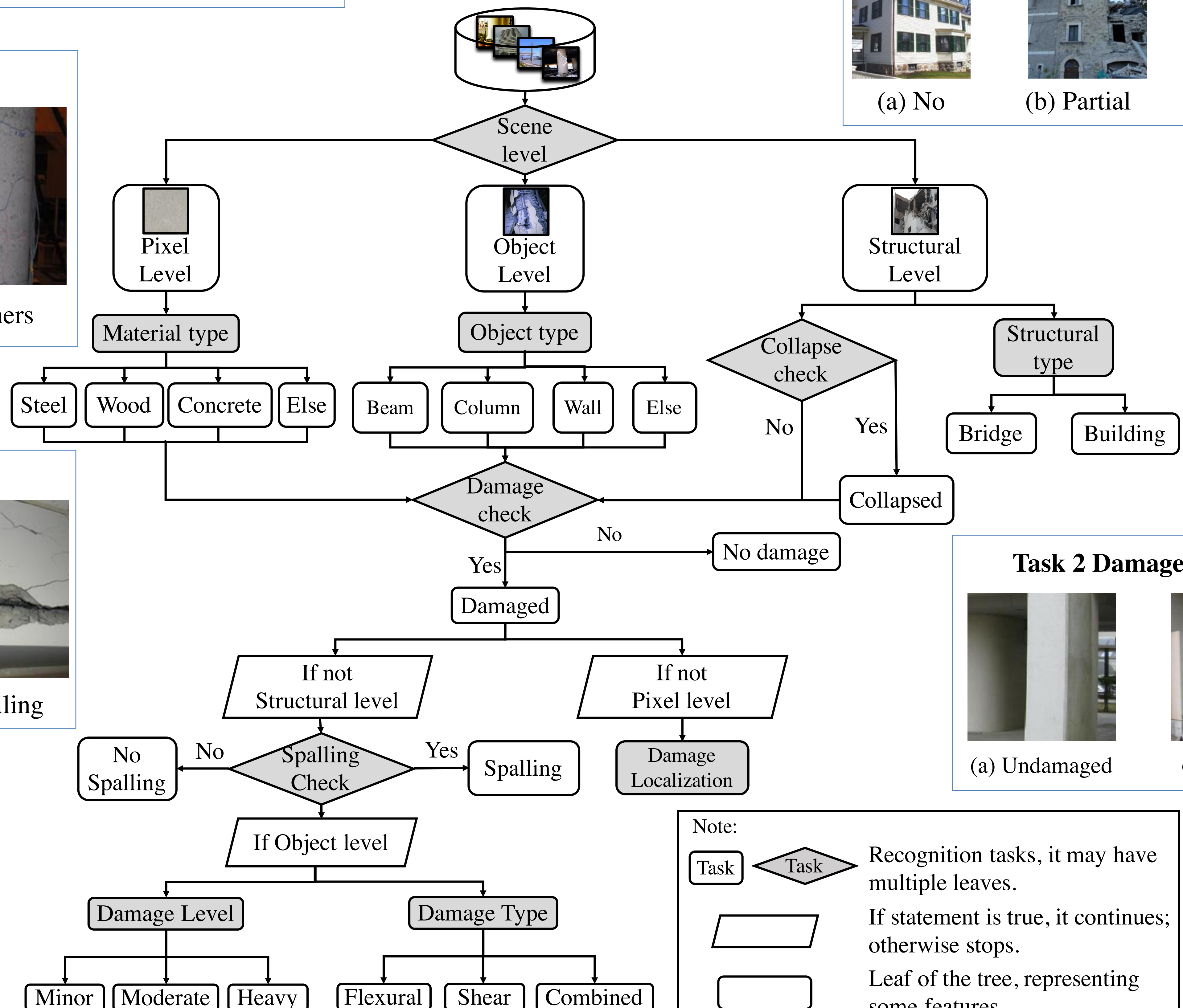
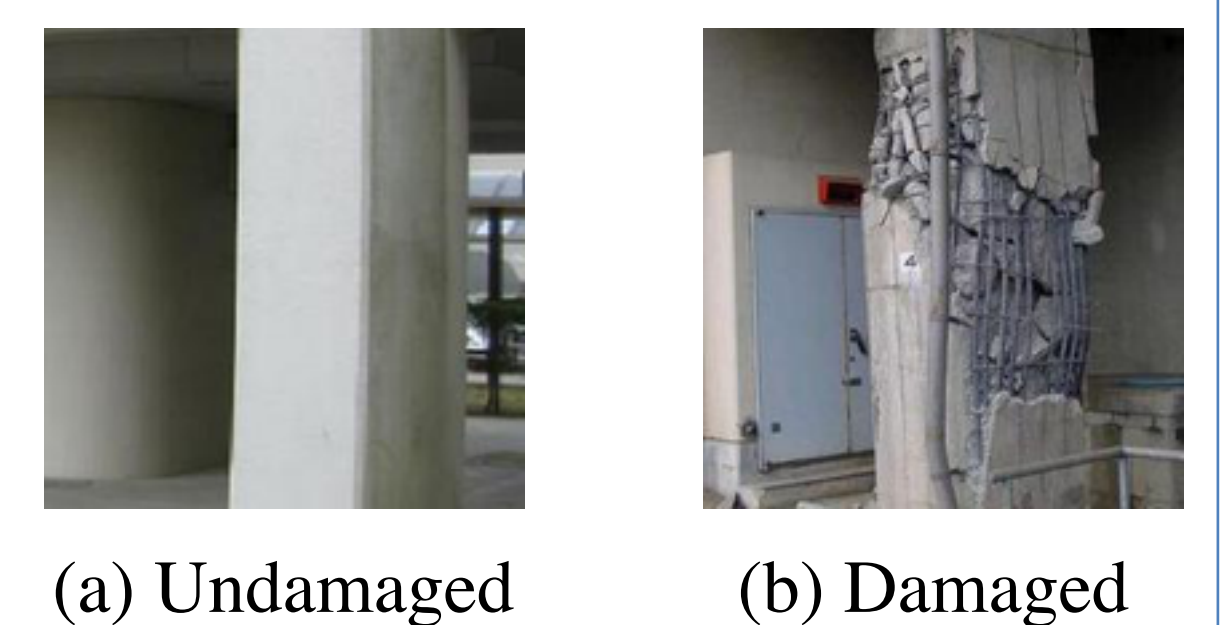
Task 4 Material Type



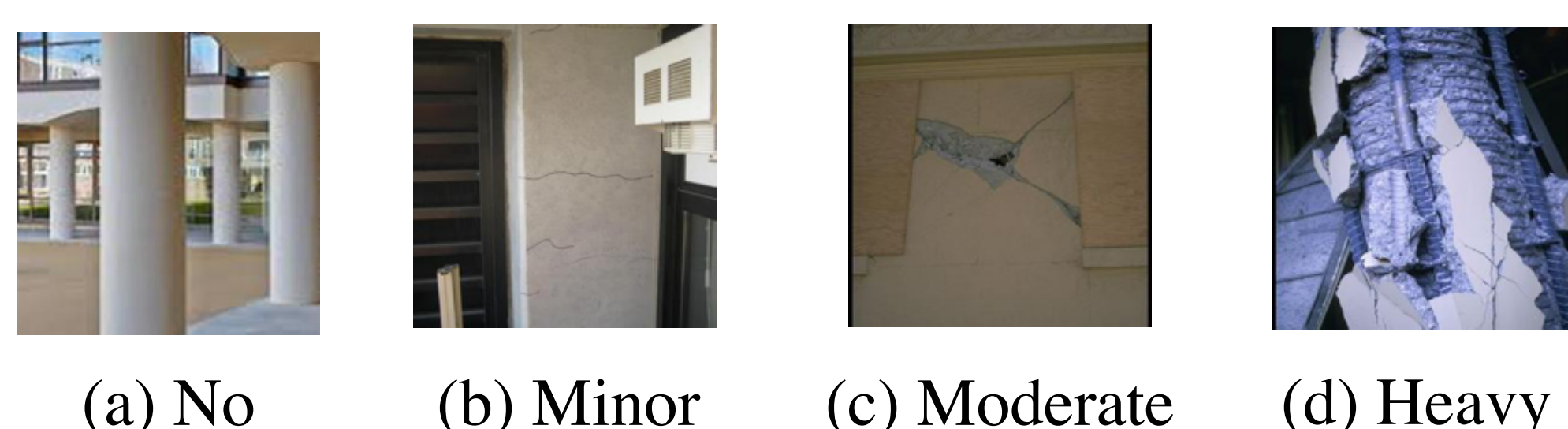
Task 3 Spalling check



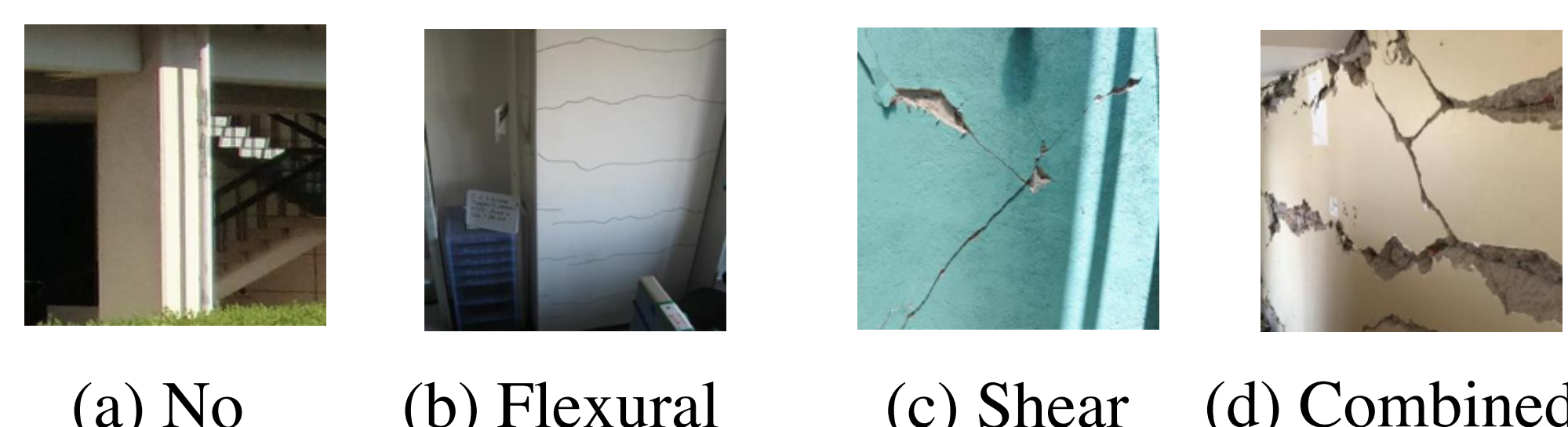
Task 2 Damage Check



Task 7 Damage Level



Task 8 Damage Type



PACIFIC EARTHQUAKE ENGINEERING RESEARCH CENTER

UC Berkeley • Caltech • OSU • Stanford • UC Davis • UC Irvine • UC Los Angeles • UC San Diego • UNR • USC • U Washington

peer.berkeley.edu